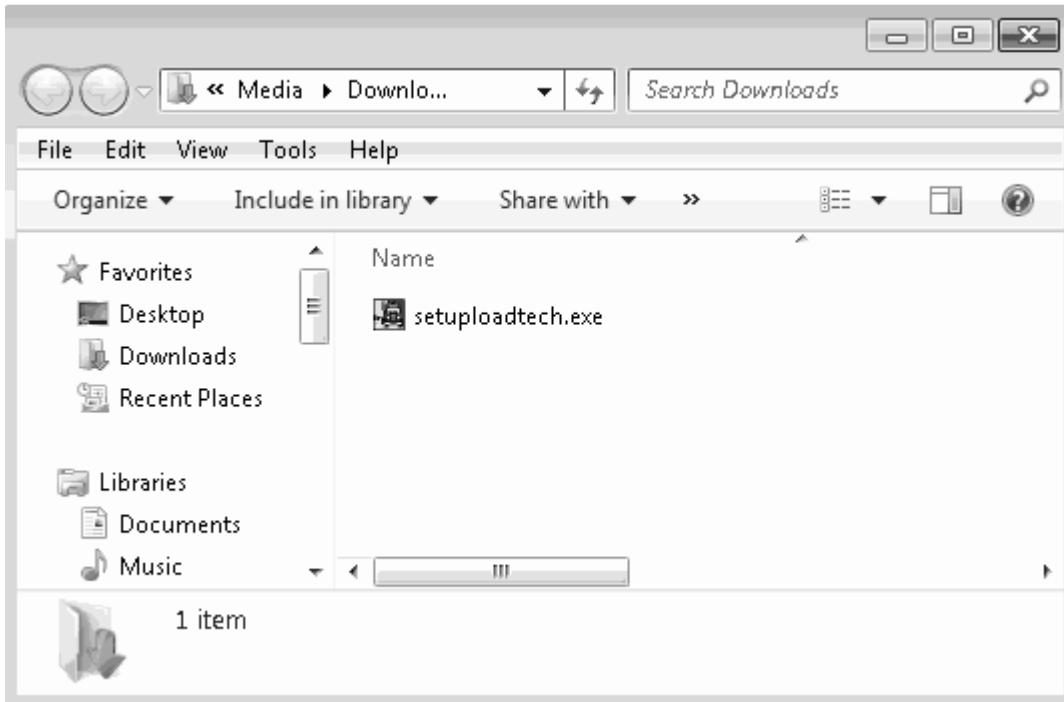


Trinity Transport LoadTech Setup

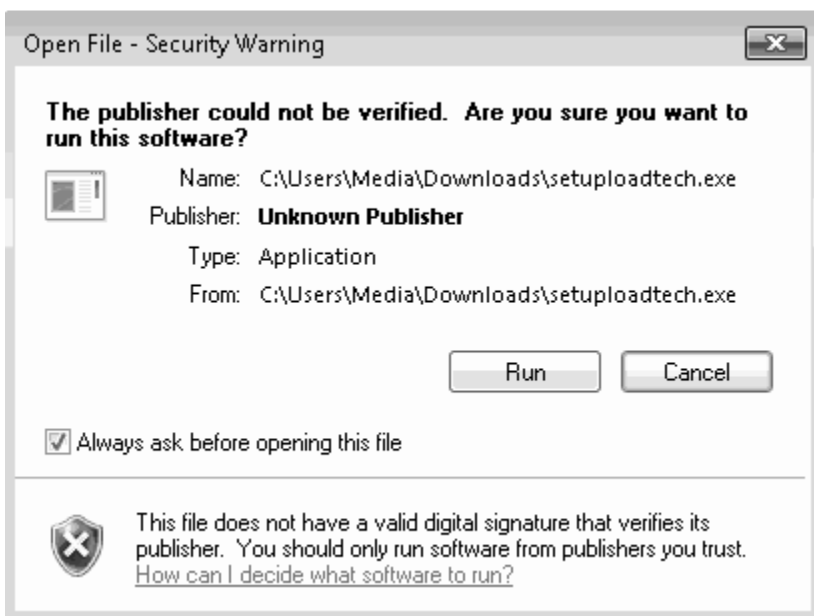
Click Setup LoadTech and download the setup file.



Locate where you saved the file, and run it.



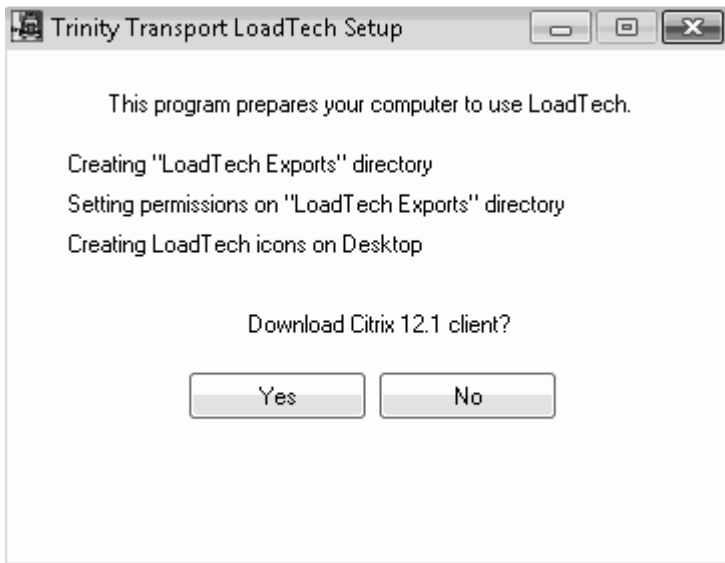
If prompted, confirm that you want to run the program.



Important notice regarding Citrix Client 12.1:

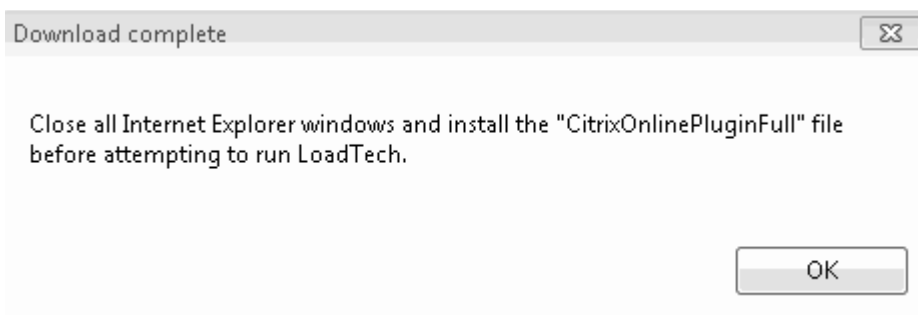
Please be sure that you update your Citrix client to the latest version. If you are not sure if you are running 12.1, proceed with the download and installation of it.

The program will create a LoadTech icon on your desktop and create a directory on your hard drive where you can save exported data. It will also prompt you to download version 12.1 of the Citrix client.



Unless you know for certain that you already have the newest version of the Citrix client, click **Yes** to download the latest copy.

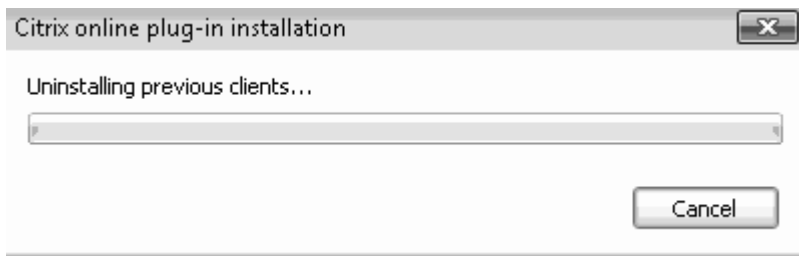
Once the download is complete, click **OK** to exit the LoadTech setup program.



If you are not installing the Citrix client, your setup is complete.

Make sure all Internet Explorer windows are closed and run the CitrixOnlinePluginFull setup that you downloaded.

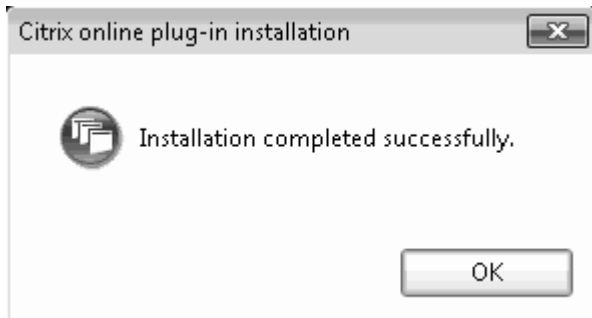
If needed, previous versions of the client will be uninstalled.



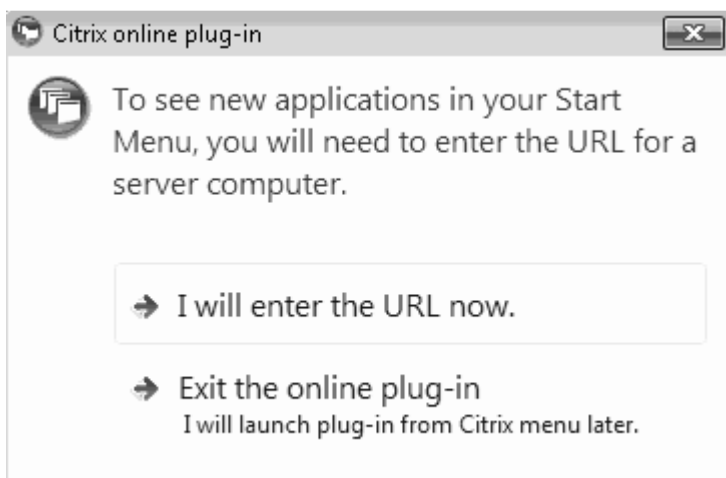
The updated client will then be installed.



If there are no errors, you will see a message saying the installation was successful.



Click **OK**, then decline to create application entries in the Start Menu by clicking Exit **the online plug-in**.



You may now open LoadTech using the LoadTech shortcut on your desktop.